



DAVINCI TECHNICAL DATA GUIDE

AUTOMATIC CONTROL VALVES

AIR RELEASE VALVES TRIPLE FUNCTION

Ref. 172A-TUS / PN 10-16



Application

Potable water distribution
Pumping stations
Irrigation systems

Approvals/Standards

Mounting flange: PN10/16/25 EN 1092-2, ISO 7005-2.
Pressure Tests acc. to EN 12266-1 Rate A. GB/T13927-1992
Pressure Tests: Seat: 1,1 x PN.
EU directive 2014/68/EU.
Products excluded, article 1, § 2b up to DN300.

Certifications

CE, WRAS

Range

DN50-300, PN10-16-25

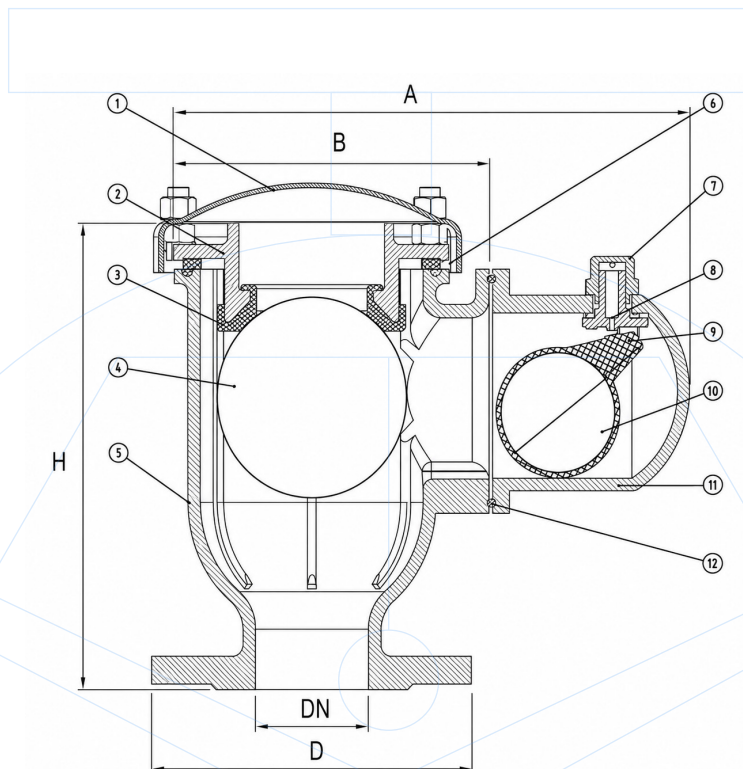


GENERAL CHARACTERISTICS

Sizes DN50 to DN300.
 Tripple effect air release valves.
 Full bore.
 Reduced bore model for DN150 and D2N00.
 Epoxy paint 250 microns.

WORKING CONDITIONS

Pressure ratings: 1.0 Mpa, 1.6 Mpa.
 Working pressure: DN50-100: 0.3-25 bar.
 DN150-300: 0.3-16 bar.
 Working temperature: 0°C + 50°C.
 Flow media: Clean water.

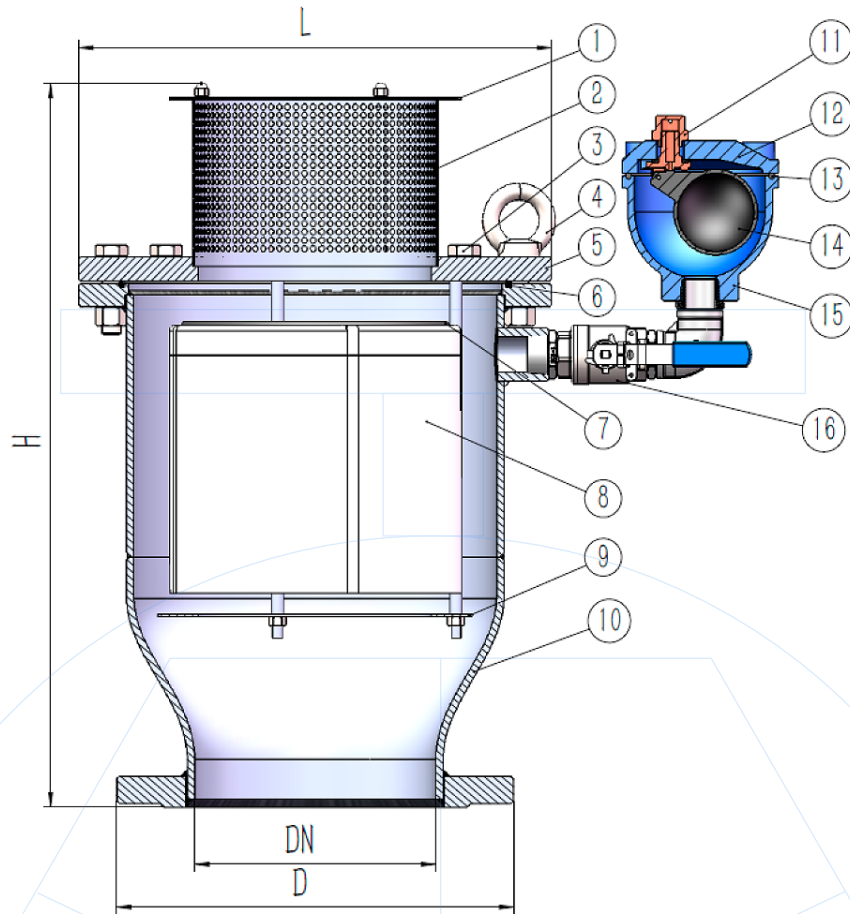


Components may be replaced with materials of equivalent or superior grade without prior notice, in accordance with our continuous improvement policy.

Nº	ITEM	MATERIAL
1	Anti dust cover	Carbon steel
2	Cover	GJS400-15
3	Sealing	EPDM
4	Float	AISI304
5	Body	GJS400-15
6	Bolts	A2-70 / Carbon steel
7	Small vent cover	Brass
8	Small vent body	Brass
9	Pin	Brass
10	Side float	ABS
11	Side body	GKS400-15
12	Gasket	EPDM
	RAL 5015 Painting	Epoxy 250 µm

DN	A	B	H	D	Flow area diameter (mm)	Weight (kg)
50	317	175	250	165	63	16.5
65	317	175	250	185	63	17
80	317	175	250	200	80	17.5
100	415	280	420	235	100	32
REDUCING BORE						
150	415	280	420	300	100	34
200	415	280	420	360	100	38

Small float available in AISI304 / AISI316.

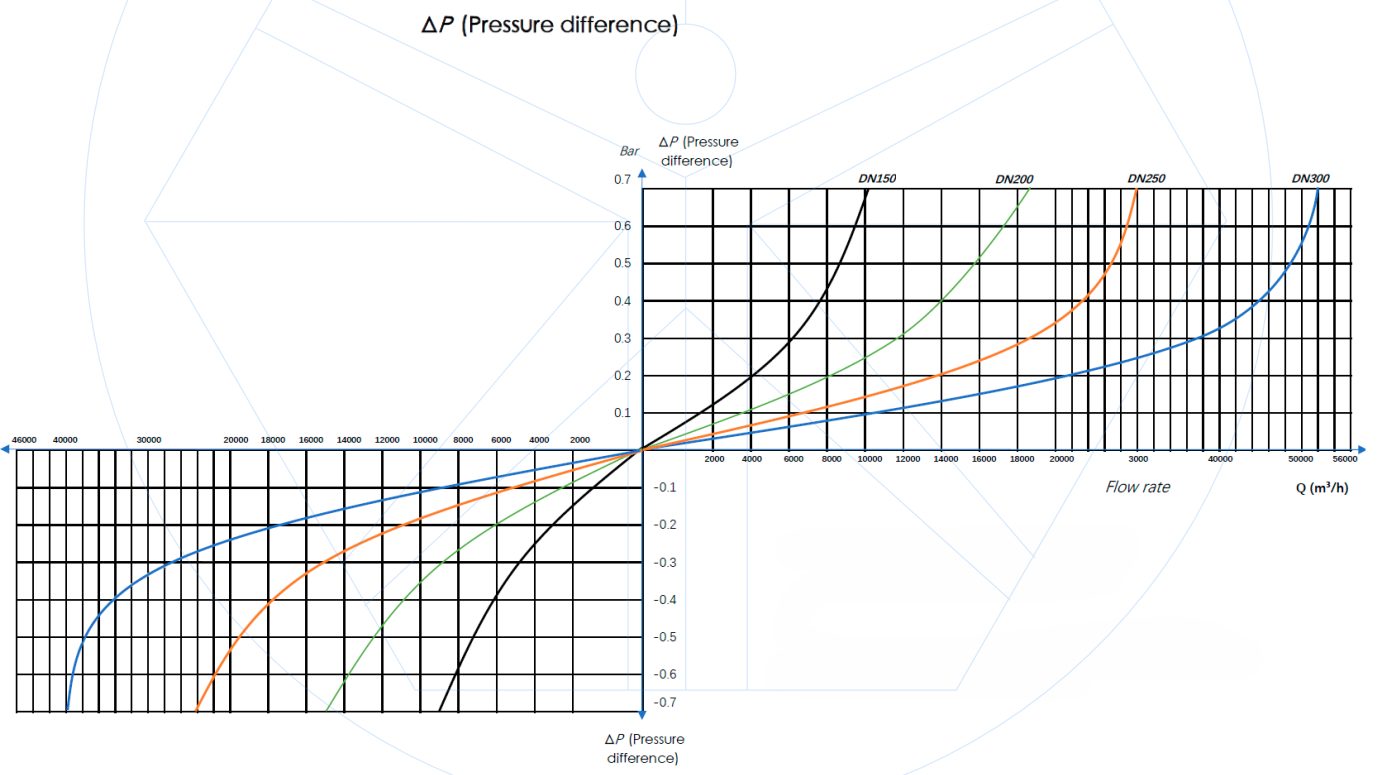
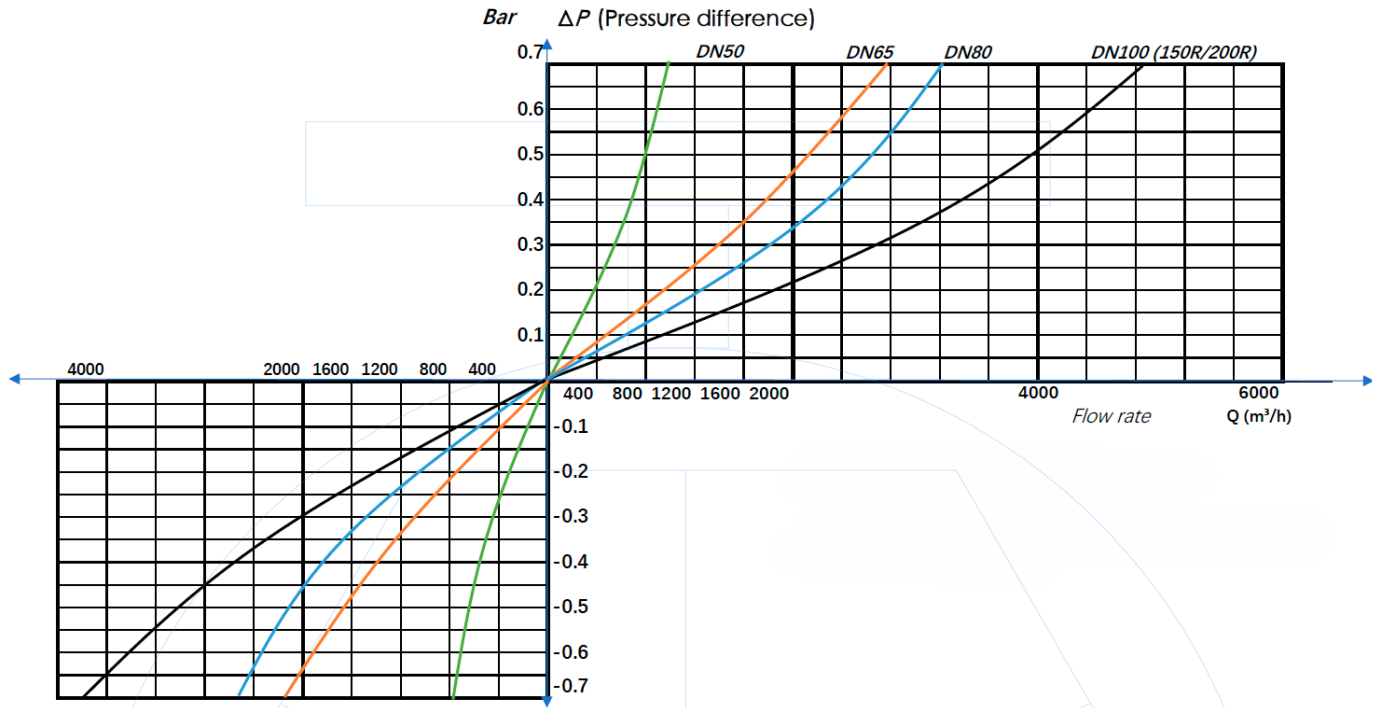


N°	ITEM	MATERIAL
1	Dust cover	Carbon steel
2	Screen	A2
3	Bolts	A2
4	Eyebolts	Stainless steel / Carbon steel
5	Cover	GJS400-15 / Carbon steel
6	Gasket	EPDM / NBR
7	Sealing ring	EPDM
8	Float	AISI304 / POM
9	Basket	AISI304
10	Body	GJS400-15 / Carbon steel
11	Small orifice	Brass / AISI304
12	Cover	GJS400-15 / Carbon steel
13	Gasket	EPDM
14	Small float	ABS / AISI304
15	Side body	GJS400-15
16	Ball valve	AISI304 / Brass
	RAL 5015 Painting	Epoxy 250 µm

DN	D	L	H	Weight (kg)
150	285	330	500	53
200	340	405	600	78
250	405	480	600	118
300	460	520	800	130

DN250 available upon request

FLOW CAPACITY DIAGRAM





CONTACT US

DAVINCI VALVES ORDER REQUEST

Ref. 172A-TUS / PN 10-16-25



Head Office CHENGDU

Room 3208 Unit 1 Building 1,
No. 6 Zhiquan Section, Dongda Street
Jinjiang District, Chengdu, Sichuan
CHINA

+86 17340168233 +86 19302892712
valves@davincivalves.com

Europe Office MADRID
SPAIN
zuzana@davincivalves.com

WEBSITE

davincivalves.com

YOUR QUALITY WATER PROJECTS PARTNER
For professionals who look for more.